



Loudwater Combined School a: School Way, Kingsmead Road
Learn, Create, Succeed
Head teacher:
Mrs. Clare Cunnington

Loudwater, High Wycombe
Buckinghamshire
HP11 1JJ
t: (01494) 524919
e: office@loudwater.bucks.sch.uk
w: www.loudwater.bucks.sch.uk

LOUDWATER UPDATE

Friday 13th May 2022

Dear Parents,

Important Calendar Dates

Monday 16th – Year 1 visit to St Peter's Church

Monday 16th – Year 2 Library visit

Monday 16th – 18th - Year 6 residential

Jubilee Bake-off Competition

Thank-you for all the amazing entries for the Jubilee bake-off competition – we were amazed by the number of talented bakers in our school! It was a hard decision to choose the winning cake. School Council members and Miss Weston were the judges and chose the winning cake.

Our chosen cakes, well done to the winners:

First – Emily & Denise Y5 & Y3

Highly commended – Pippa Y2



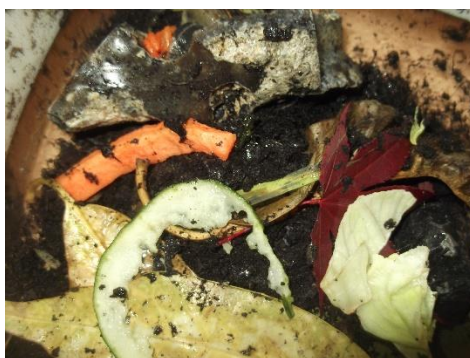
We will be submitting a photo of the winning cake along with the recipe to the Buckinghamshire wide Schools' Platinum Jubilee Cake competition.

News from the classes this week:

Foundation Stage

In Foundation Stage this week we have been continuing our learning about snails. We have looked at a piece of art, created by Henri Matisse in the 1950s. It is a collage called *The Snail*, and it is a fairly abstract piece. We had fun, trying to work out what it was in the collage, and we have written about it and tried to make our own collages in a similar style.

We have also been studying some snails. We wondered what their favourite food was and so we set up an investigation to find out what they like. All the books say that they like leaves, so we put in some lettuce. We also gave them some carrot and some cucumber. We left it with the snails overnight. Here are the before and after pictures.



It may be a little hard to see, but the carrot and lettuce are virtually untouched, but the cucumber has almost all gone, so we think that our snails like cucumber best, which was not what we had expected!

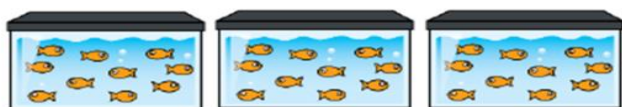
Our Maths has involved counting to thirty and learning to recognise and write the numbers in the twenties. We have also been matching shapes and copying cube models and patterns.

Year One

This week in English we have been continuing our work on the fairy tale 'Hansel and Gretel'. We thought that Hansel and Gretel could have made a map to help them find their way home. We talked about how we could use symbols to represent the features that the children would see and we created our own maps for them. We have also been looking at the job of speech bubbles. We had fun writing a conversation between Hansel, Gretel and the witch, using speech bubbles. In our classroom we have two very different copies of Hansel and Gretel, we have read them both and have been identifying the differences and similarities between the versions. We have learnt that fairy tales have a happy ending, we talked about this and sorted the characters into those that did have a happy ending and those that didn't.

In Maths we have been making equal groups of objects. We reminded ourselves that the word equal means the same as. We worked in pairs to make equal grouping with the counters. We also had to identify groups of objects that were unequal. We have also been adding equal groups of objects. This is one of the examples that we have working on:

How many fish are there?
Complete the sentences.



___ + ___ + ___ = ___
There are ___ fish.

We are constantly practicing our number bonds to 10 and the children are working very hard on this but consistent practice at home would really help with this. This is a game we play in school; it is a very effective way of embedding these facts.

<https://www.topmarks.co.uk/maths-games/hit-the-button> (choose the number bonds option and then up to 10 and make 10)

This week in Geography we have been busy walking around our school grounds and identifying the features that make our school a special place. We then sorted these features into those that are natural and those that have been made.

In RE we have been thinking about the places that are special to us. On Monday afternoon, we will be visiting St Peter's Church. We will be looking at the church features and the reason why it is a special place for Christians.

Year Two

In English, we have been reading information texts about owls. We have learned about the features of an information text e.g. sub-headings, captions, diagrams, labels, photos and facts. We then practised writing captions for different photographs of owls, sorted facts about owls into groups using sub-headings and labelled a diagram of an owl. In Phonics, we have revisited rules for adding the suffix -ed to verbs and how to read and write words using the sound j, g, dge and ge e.g. bridge, garage, jelly and giant.

In Guided Reading, we have started to read the story 'The Girl and the dinosaur' by Hollie Hughes and Sarah Massini. We have made predictions about what might happen in the story, posed some wonderings, inferred what the characters might be thinking and answered retrieval questions.

In Maths, we have learned about the language of height and length e.g. long, longer and longest or tall, taller and tallest. We have learned to measure objects using non-standard measures such as cubes and base 10. Also, we have compared measures and explained how to measure accurately.

In Geography, we have continued to follow the Three Bears on their journey around the world! This week they visited Madrid in Spain. We thought about how they might get there, labelled Spain on a world map, helped to pack the bears' suitcase and sorted Madrid landmarks into physical features and human features.

In RE, we have heard the Islamic creation story and made comparisons to the Christian creation story.

In PSHE, we explored different feelings and how we can show these emotions using different facial expressions and body language.

<https://readingeggs.co.uk/>

<https://play.numbots.com/#/account/school-login-type>

Year Three

This week in English, we have been planning to write short mystery stories to create suspense for the reader. We carefully planned our stories, thinking about the characters, settings and events that will happen. We then used our plans to write our stories. We thoroughly checked our work and used thesaurus and dictionaries to improve our writing. We then used editing pens to add our improvements.

In Maths, we have been learning about fractions of objects. We have been learning how to use resources such as counters and Base 10 to find fractions of amounts. In

Computing, we have finished using and applying skills to complete our PowerPoint presentations. In Geography, we have learnt about the sub biomes to the 5 main types. We have explored animals that live there as well as the temperature in these locations.

In PSHE, we have discussed in depth about how and why healthy eating is good for your teeth. In Music, we have been learning about singing in a gospel style by exerting extra syllables whilst keeping in time. In PE, we have been learning how to bowl towards a target. We have also been learning the correct way to hold a cricket bat.

<https://www.bbc.co.uk/bitesize/topics/z849q6f/articles/zvsp92p>

<https://byjus.com/biology/biomes-of-the-world/#kinds-of-biomes>

<https://numbots.com/>

<https://www.frogplay.net>

Year Four

During our English lessons this week we have started our new writing unit about biographies. We have read examples of different biographies and discussed the purpose and audience for them. We have also thought about the features of biographies and began creating a writer's toolkit for use in our own writing. Finally, we have found out about the life of Grace Darling and the rescue that she took part in.

During our Maths lessons, we have finished our unit on decimals and started our unit on money this week. We have ordered decimals in ascending and descending order, as well as finding out how to write one half, one quarter and three quarters as decimals. We have recapped the different coins and notes that we use, and converted money from pounds to pence.

During our Geography lessons, we found out about urban and rural areas of the UK. We have looked at how the land is used and used OS maps to find different features of an urban and rural area. In our PSHE lesson, we learned about compassion and how to be compassionate to all living things.

<https://kids.nationalgeographic.com/geography/countries/article/united-kingdom>

Year Five

In Guided Reading this week, we have learnt about some amazing animal migrations through an information text detailing the journeys that Great White Sharks, Humpback Whales, Caribou and Monarch Butterflies undertake.

In English, we explored persuasive devices such as rhetorical questions, using statistics and research, exaggeration and anecdotal evidence. We then had to use these in a letter to a Scottish Head Teacher who didn't want to include Spanish in her curriculum. We tried hard to convince her to change her mind by offering reasons why learning a language is beneficial. We concentrated on both the benefits gained from increased cultural awareness as well as proven improvements in memory and the ability to multitask! In spelling this week, we have focussed on some challenging homophone pairs and definitions of the words including *compliment* and *complement*.

In Maths, we continue to focus on decimals and explored thousandths in more detail. We then had to round decimals to the nearest whole number, tenth and hundredth and explain how to do this efficiently.

In Geography, we learnt that the UK has 107 counties. We discussed some of the physical geographical differences across these including: landscape, weather, soil type, proximity to markets and available space. Mrs PC then asked us to research a particular county with a focus on farming and a major regional food product. We produced a poster on Microsoft Word to show our findings.

Our Geography fieldwork has finally produced some interesting data after a couple of rain showers this week! We have been faithfully uploading this to the Met Office's WOW database and are contributing to the national weather picture.

Further your knowledge of physical geography here: [Toporopa Geography Games](#) | [Learn the map of Europe](#)

Year Six

In Year 6 this week it has been SATs week. We have completed our End of Key Stage 2 assessments in Grammar, Punctuation & Spelling, Reading and Mathematics (arithmetic and reasoning). We should all feel very proud of ourselves as we have worked very hard this year and were very focused during the tests, making sure we checked our answers carefully.

In Maths we have been practising using a protractor. We have measured and drawn different sized angles, trying to be as accurate as we can be using either the inner or outer scale.

In English we have continued to write the next paragraph in our Charles Darwin biography.

In Geography this week, we have continued to work with our partner on our learning where we have compared two contrasting areas of the UK.

In PSHE we have thought about the question – What does it mean to be independent? We have thought significant milestones in our lives and how we might feel at the different times. This week in class, we have been enjoying the music of U2.

For regular times table practice

Times Table Rock Stars – children have their own logins - <https://ttrockstars.com/>

For regular practice across a whole range of subjects

I am learning – children have their logins

<https://www.iamlearning.co.uk/my/login>

For regular Maths practice

Maths Whizz – children have their logins – Also part of their weekly home learning

Achievement Award Winners

	Foundation Stage	Year One	Year Two	Year Three	Year Four	Year Five	Year Six
06/05/22	David	Lucas	Kallia	Darcy A	Ruby	Ayaan	Hyobin
13/05/22	Maya	Ahil	Magdalena	Evalyn	Michael	Lisa	All pupils

The following children have been recognised in achievement assembly for their good behaviour:

	Foundation Stage	Year One	Year Two	Year Three	Year Four	Year Five	Year Six
06/05/22	Otilia Evie	Christopher Elsie	Pippa Felix	Ryan Jake	Finley Sulaymaan	Emily Kristina	Nisali Amaaya
13/05/22	Luna Rose	Hayden Marley	James Diya	Amine Azhaan	Charlie Kata	Maya Ayaan	Logan W Milla

The following children, in KS1, have made particular efforts with Reading Eggs and Numbots:

	Numbots	Reading Eggs
06/05/22	Zak – Y1 Ruben – Y2	Ailbe – FS Felicity – Y1 James – Y2
13/05/22	Yanis – Y1 Zain – Y2	Emily – FS Lily E – Y1 Kallia – Y2

The following children, in KS2, have made particular efforts with Accelerated Reader and Times Tables Rock Stars:

	Accelerated Reader	Times Tables Rock Stars
06/05/22	Emily – Y3 John – Y4 Tegan – Y5 Leah – Y6	Mei – Y3 Emily – Y4 Freya – Y5 Adna – Y6
13/05/22	Aoife-Rose – Y3 Mia – Y4 Jacob P – Y5	Darcy P – Y3 Callum – Y4 Isabelle – Y5 Amaaya – Y6

Attendance

	Foundation Stage	Year One	Year Two	Year Three	Year Four	Year Five	Year Six
06/05/22	97%	90%	99%	91%	93%	93%	77%
13/05/22	95%	98%	96%	95%	99%	97%	99%

Punctuality

Number of children arriving after their class start time.

	Foundation Stage	Year One	Year Two	Year Three	Year Four	Year Five	Year Six
06/05/22	0	0	1	2	0	0	2
13/05/22	0	0	0	1	1	0	0

House points for the week

	Beethoven	Mozart	Tchaikovsky	Elgar
06/05/22	128	140	154	149
13/05/22	112	143	133	143

Flackwell Heath Library Visits

We have resumed our visits to Flackwell Heath Library. The purpose of the visits is to enable the children to choose books from the library that they can enjoy in class. These are the dates for visits:

16th May – Year Two 1

23rd May – Year Five

6th June – Year 3

13th June – Year Four

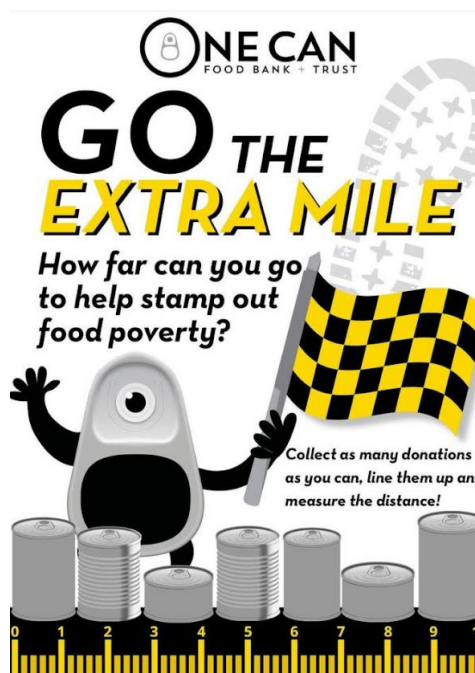
20th June – Year One

27th June – Year Six

4th July – Foundation Stage

Advice from Gemma (Family Support Adviser)

One Can Trust – Are you able to help?



CAN WE GO THE EXTRA MILE?

Thank you so much for all of the donations that have already been sent into school. We have been inundated with lots of amazing food and supplies which will no doubt help others in the community.

Please keep your donations coming in and place them into the One Can collection box outside the school office.

Please have a look at the attached flyer 'generic wants and needs' which outlines all of the items that the Food Bank are currently in need of.

As a school, we are taking part in the challenge to 'Go the extra mile'! Our aim is to collect as many donations as we possibly can, line them up and measure the distance. How far can our donations reach?

Supermarket Food Drive Volunteers

One approach the One Can Food Bank are taking is to encourage customer donations at weekend

supermarket food drives. Volunteers simply hand out flyers to customers as they enter the store and thank them for donations as they leave. The food drives have been enormously successful and significantly increase customer donations. Their goal is to have different teams working at different stores so that volunteers only need to help for 1 or 2 hours every 4-6 weeks. Children can help too but they would need to be supervised at all times. The weekend food drives run 10-4pm with each shift being 1 or 2 hours. **If you are interested in helping then please see the flyer attached which has more information about this and who to contact.**

School uniform – Can you support other families in our school?

Has your child grown out of their current school uniform? Does your child have any school uniform that they no longer need?

If so, then please hand this to a staff member at the gate in the mornings or give it to a member of staff in the school office.

We would appreciate any of the following items:

- School skirts and trousers
- School summer dresses
- School jumpers and cardigans
- School t-shirts
- PE tops
- PE jumpers

We would also appreciate it if the uniform that you donate is clean and in good condition. Thank you for your support.

Meaningful May (Action for Happiness Calendar)

Bring joy to yourself, those around you and your loved ones. Are you and your family able to complete any of these challenge over the next few weeks?

8 Set yourself a kindness mission to help others today	9 What values are important to you? Find ways to use them today	10 Be grateful for the little things, even in difficult times	11 Look around for things that bring you a sense of awe and wonder	12 Listen to a favourite piece of music and remember what it means to you	13 Find out about the values or traditions of another culture	14 Get outside and notice the beauty in nature
15 Do something to contribute to your local community	16 Show your gratitude to people who are helping to make things better	17 Find a way to make what you do today meaningful	18 Send a hand-written note to someone you care about	19 Reflect on what makes you feel valued and purposeful	20 Share photos of 3 things you find meaningful or memorable	21 Look up at the sky. Remember we are all part of something bigger
22 Find a way to help a project or charity you care about	23 Recall three things you've done that you are proud of	24 Make choices that have a positive impact for others today	25 Ask someone else what matters most to them and why	26 Remember an event in your life that was really meaningful	27 Focus on how your actions make a difference for others	28 Do something special and revisit it in your memory tonight
29 Today do something to care for the natural world	30 Share a quote you find inspiring to give others a boost	31 Find three reasons to be hopeful about the future				

If there is something that you would like to talk about in more detail, please contact Gemma (Family Support Advisor) via email (gnortheast@loudwater.bucks.sch.uk) or via her work mobile 07792142825.

FOLS Annual General Meeting

Attached to this newsletter, you will find notice of and the agenda for the FOLS Annual General Meeting due to take place on Tuesday 24th May 2022.

FOLS-Platinum Jubilee Bears

Please see the attached flyer for more information.

You will be able to purchase a bear on the School Gateway.

The Great Loudwater Bake Off

St Peter's Church are holding the Great Loudwater Bake Off on Friday 3rd June 2022 from 12pm until 2pm. Please see the attached flyer for more information regarding this.

Yours faithfully

Clare Cunningham

Mrs C Cunningham
Head teacher

Calendar events for 2021-22

<u>May</u>	<u>June</u>	<u>July</u>
Week beginning 2nd Parent /Teacher Consultations (FS-Y5) 2nd Bank Holiday 9th Year 6 SATs Week 16th Year 5 Assessment Week May 16th – 18th Year 6 residential W/c 23rd Jubilee Week 24th Plate Painting (whole school) 27th School Closed Training Day for teachers 30th – 3rd Half term break	6th Children return to School 9th Open Day 9.30 – 10.30 13th – 17th Assessment Week Y1, Y3 & Y4 22nd Class photos	1st School Closed Training day for teachers 5th Secondary School Induction Day (Y6) New Parents Meeting 8th Sports Day 9th FOLS Summer Fete 13th Reserve Sports Day 15th End of Year Discos 19th 7.00pm Y6 Leavers Production 20th 9.30am Y6 Leavers Assembly School closes at 2pm for summer break 21st Additional day added to summer break in lieu of the Queen's Jubilee Bank Holiday
<u>Class Assemblies Summer Term</u> 9.05 Start 19 th May - Year Four 26 th May - Year One 16 th June - Year Six 23 rd June - Year Five 30 th June - Year Two 7 th July - Year Three 14 th July - Foundation Stage		

Please note: Pupils should not be taken out of school during term time for family holidays